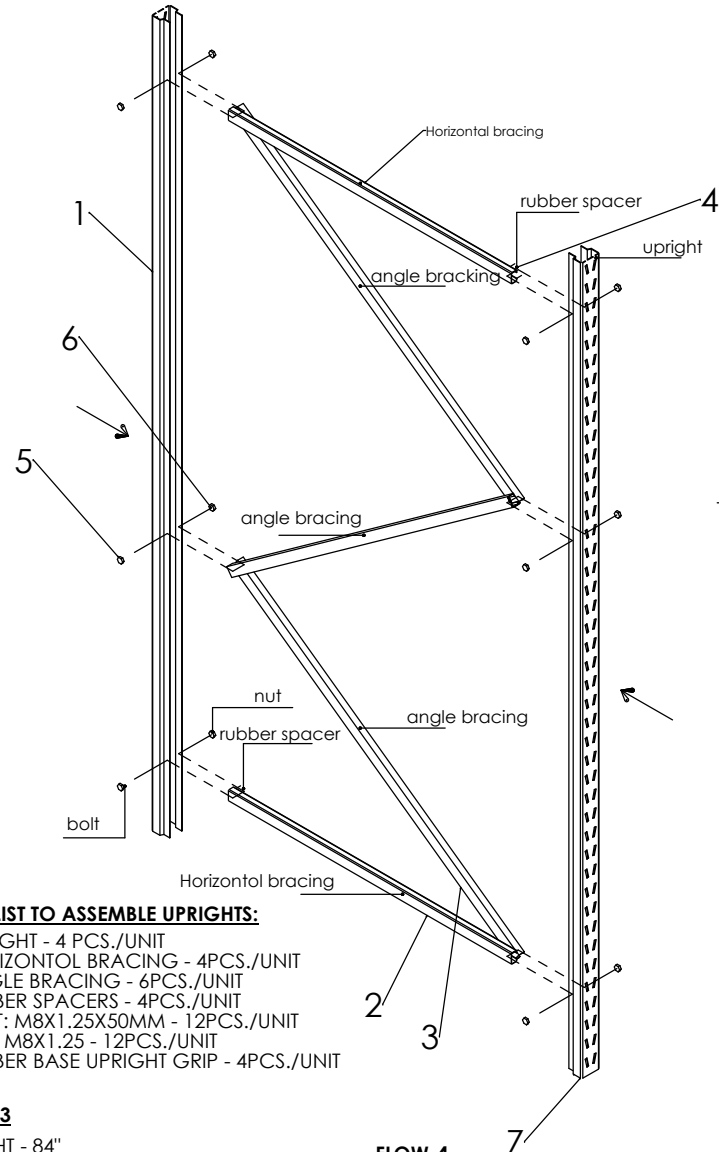


STEP 1:

- 1 - LAYDOWN 2 UPRIGHTS ON THE FLOOR, WITH OPEN SIDES FACING EACH OTHER.
- 2 - WHEN ASSEMBLING BOTTOM & TOP HORIZONTAL BRACING, USE THE RUBBER SPACER
- 3 - CONNECT ONE END OF THE HORIZONTAL BRACING WITH 1ST UPRIGHT AND CONNECT THE OTHER END OF HORIZONTAL BRACING AND ANGLE BRACING WITH THE 2ND UPRIGHT
- 4 - USE RUBBER BASE UPRIGHT GRIP ON BOTTOM OF THE UPRIGHTS.

GRAVITY FLOW RACK



PARTS LIST TO ASSEMBLE UPRIGHTS:

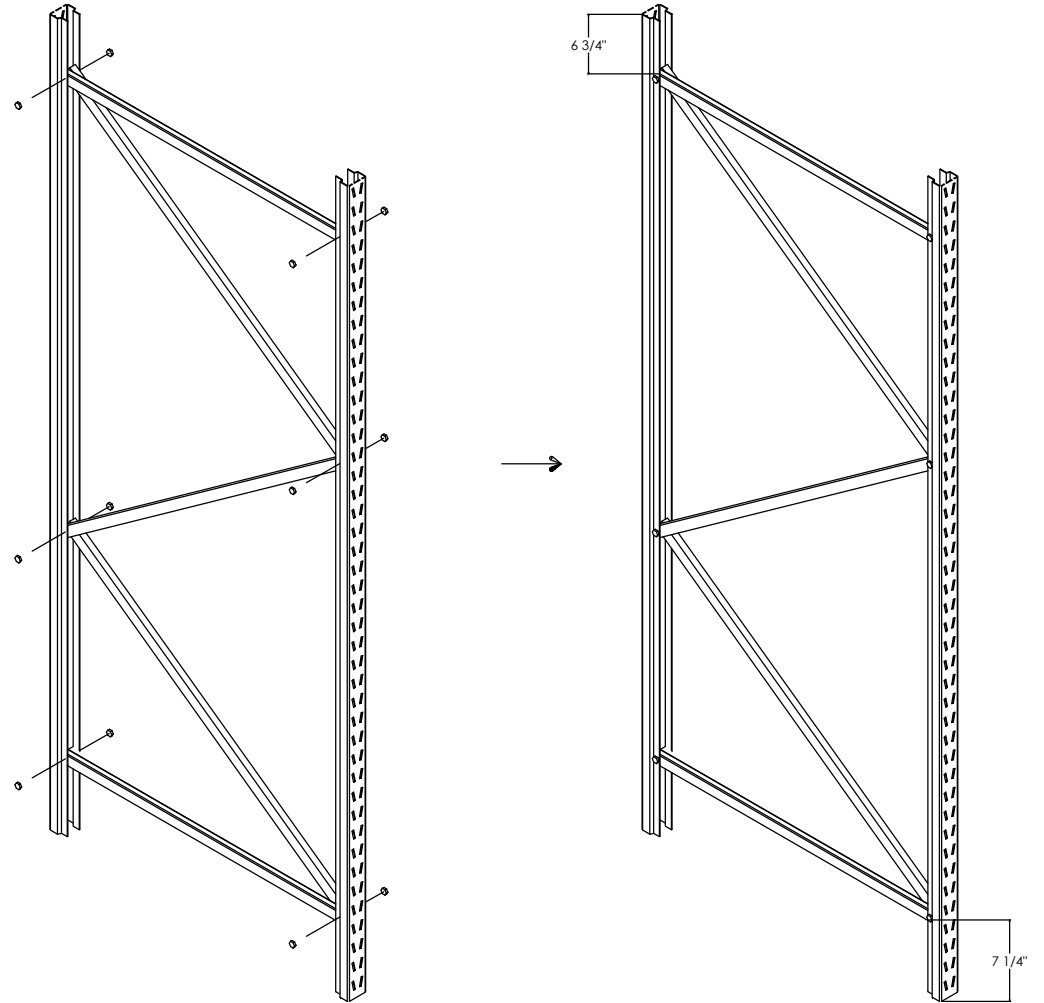
- 1 - UPRIGHT - 4 PCS./UNIT
- 2 - HORIZONTAL BRACING - 4PCS./UNIT
- 3 - ANGLE BRACING - 6PCS./UNIT
- 4 - RUBBER SPACERS - 4PCS./UNIT
- 5 - BOLT: M8X1.25X50MM - 12PCS./UNIT
- 6 - NUT: M8X1.25 - 12PCS./UNIT
- 7 - RUBBER BASE UPRIGHT GRIP - 4PCS./UNIT

FLOW-3

- UPRIGHT - 84"
- HORIZONTAL BRACE OVERALL LENGTH - 34"
- ANGLE BRACE OVERALL LENGTH - 41.60"
- DIVIDER OVERALL LENGTH - 37"
- ROLLER OVERALL LENGTH - 37"

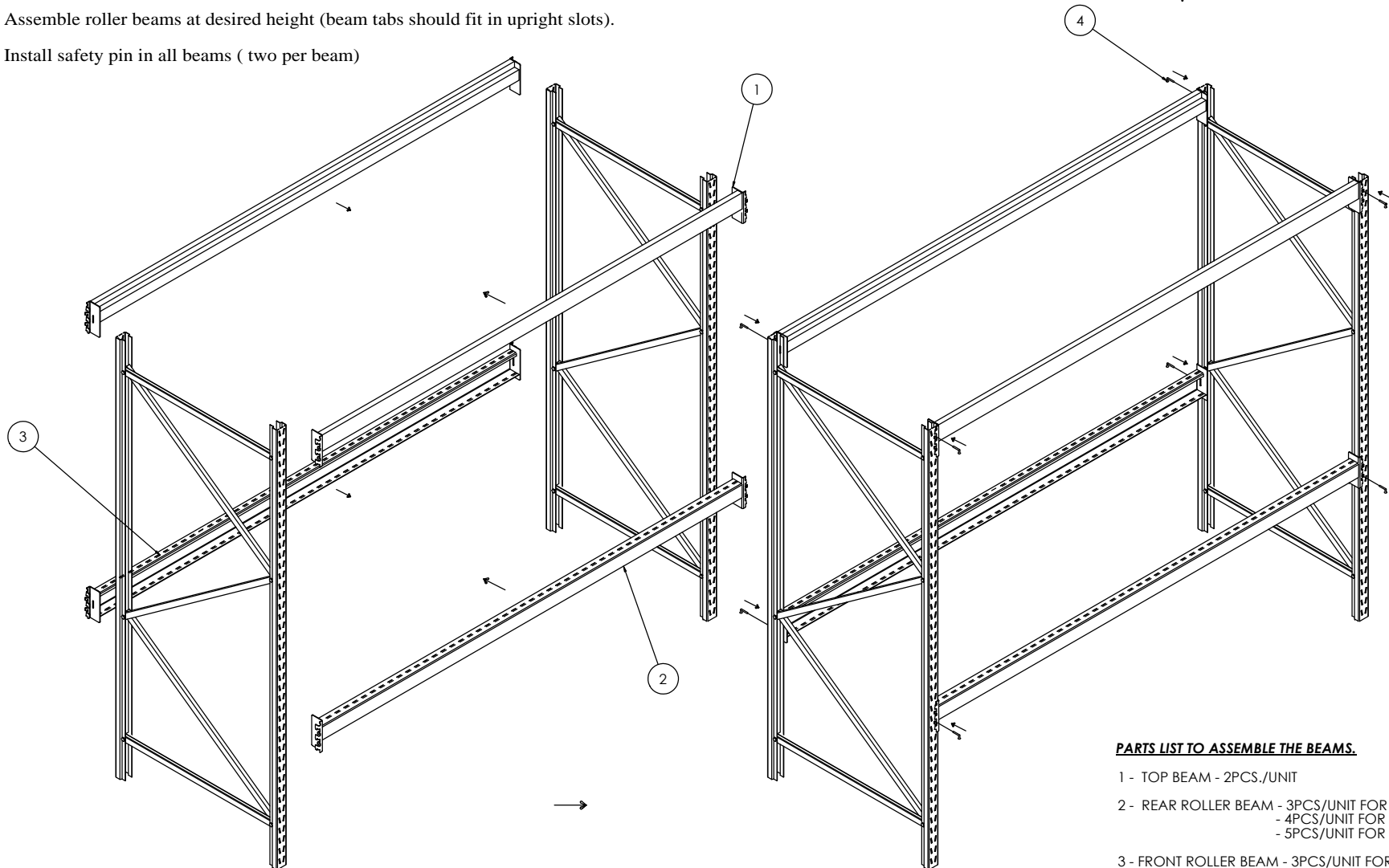
FLOW-4

- UPRIGHT HEIGHT - 84"
- HORIZONTAL BRACE OVERALL LENGTH - 46"
- ANGLE OVERALL LENGTH - 52"
- DIVIDER OVERALL LENGTH - 49"
- ROLLER OVERALL LENGTH - 49"



STEP 2:

- 1 - Assemble 2 top beams (beam tabs should fit in upright slots).
- 2 - Assemble roller beams at desired height (beam tabs should fit in upright slots).
- 3 - Install safety pin in all beams (two per beam)



PARTS LIST TO ASSEMBLE THE BEAMS.

- 1 - TOP BEAM - 2PCS./UNIT
- 2 - REAR ROLLER BEAM - 3PCS/UNIT FOR FLOW-3
- 4PCS/UNIT FOR FLOW-4
- 5PCS/UNIT FOR FLOW-5
- 3 - FRONT ROLLER BEAM - 3PCS/UNIT FOR FLOW-3
- 4PCS/UNIT FOR FLOW-4
- 5PCS/UNIT FOR FLOW-5
- 4 - SAFETY PIN - 2PCS/BEAM
16 PCS. FOR FLOW-3
20 PCS. FOR FLOW-4
24 PCS. FOR FLOW-5

STEP 3:

- 1 - Assemble 8 rollers per shelf.
- 2 - Assemble 4 dividers per shelf.

PARTS LIST TO ASSEMBLE ROLLERS & DIVIDERS

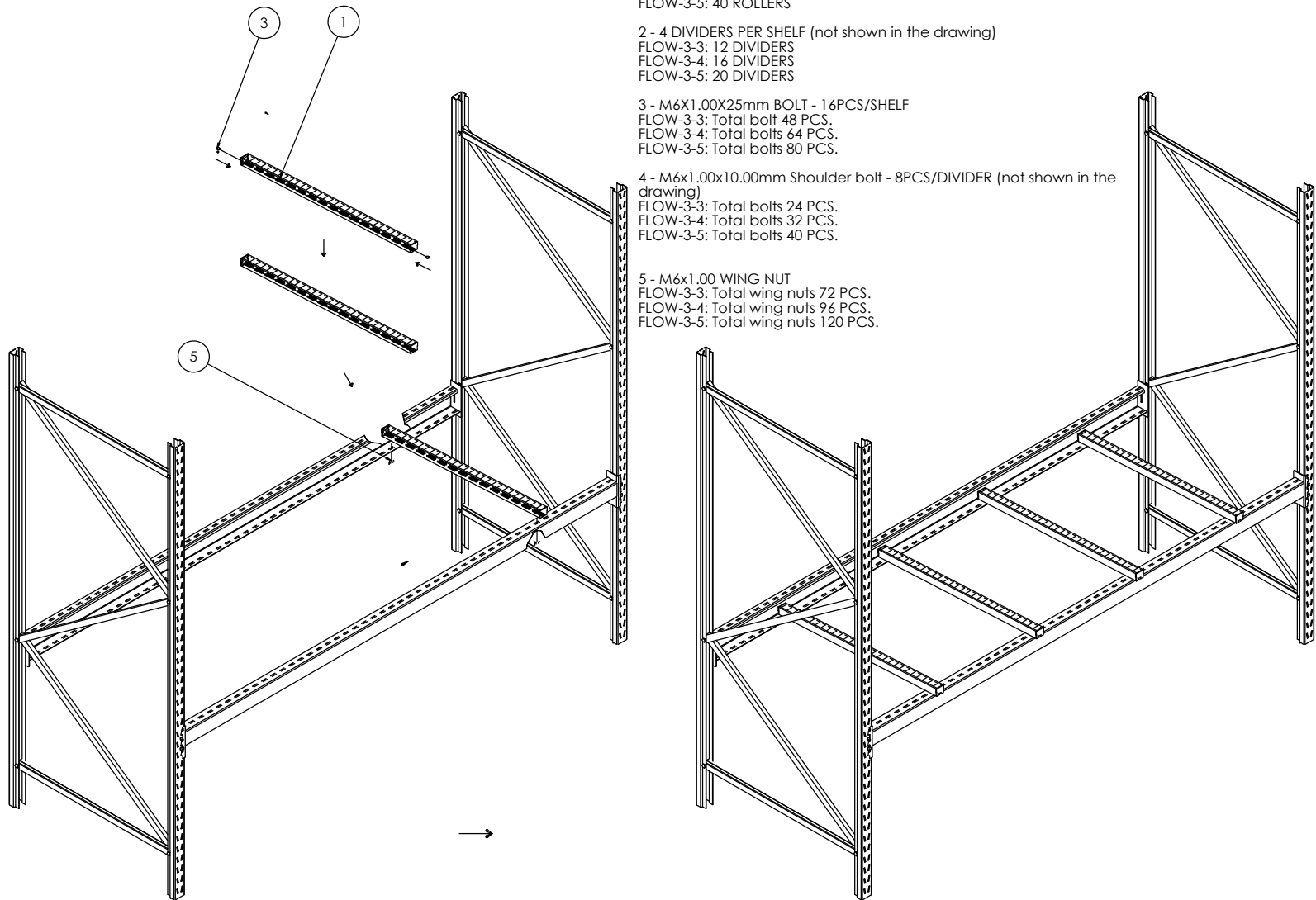
1 - 8 ROLLERS PER SHELF
FLOW-3-3: 24 ROLLERS
FLOW-3-4: 32 ROLLERS
FLOW-3-5: 40 ROLLERS

2 - 4 DIVIDERS PER SHELF (not shown in the drawing)
FLOW-3-3: 12 DIVIDERS
FLOW-3-4: 16 DIVIDERS
FLOW-3-5: 20 DIVIDERS

3 - M6x1.00x25mm BOLT - 16PCS/SHELF
FLOW-3-3: Total bolt 48 PCS.
FLOW-3-4: Total bolts 64 PCS.
FLOW-3-5: Total bolts 80 PCS.

4 - M6x1.00x10.00mm Shoulder bolt - 8PCS/DIVIDER (not shown in the drawing)
FLOW-3-3: Total bolts 24 PCS.
FLOW-3-4: Total bolts 32 PCS.
FLOW-3-5: Total bolts 40 PCS.

5 - M6x1.00 WING NUT
FLOW-3-3: Total wing nuts 72 PCS.
FLOW-3-4: Total wing nuts 96 PCS.
FLOW-3-5: Total wing nuts 120 PCS.



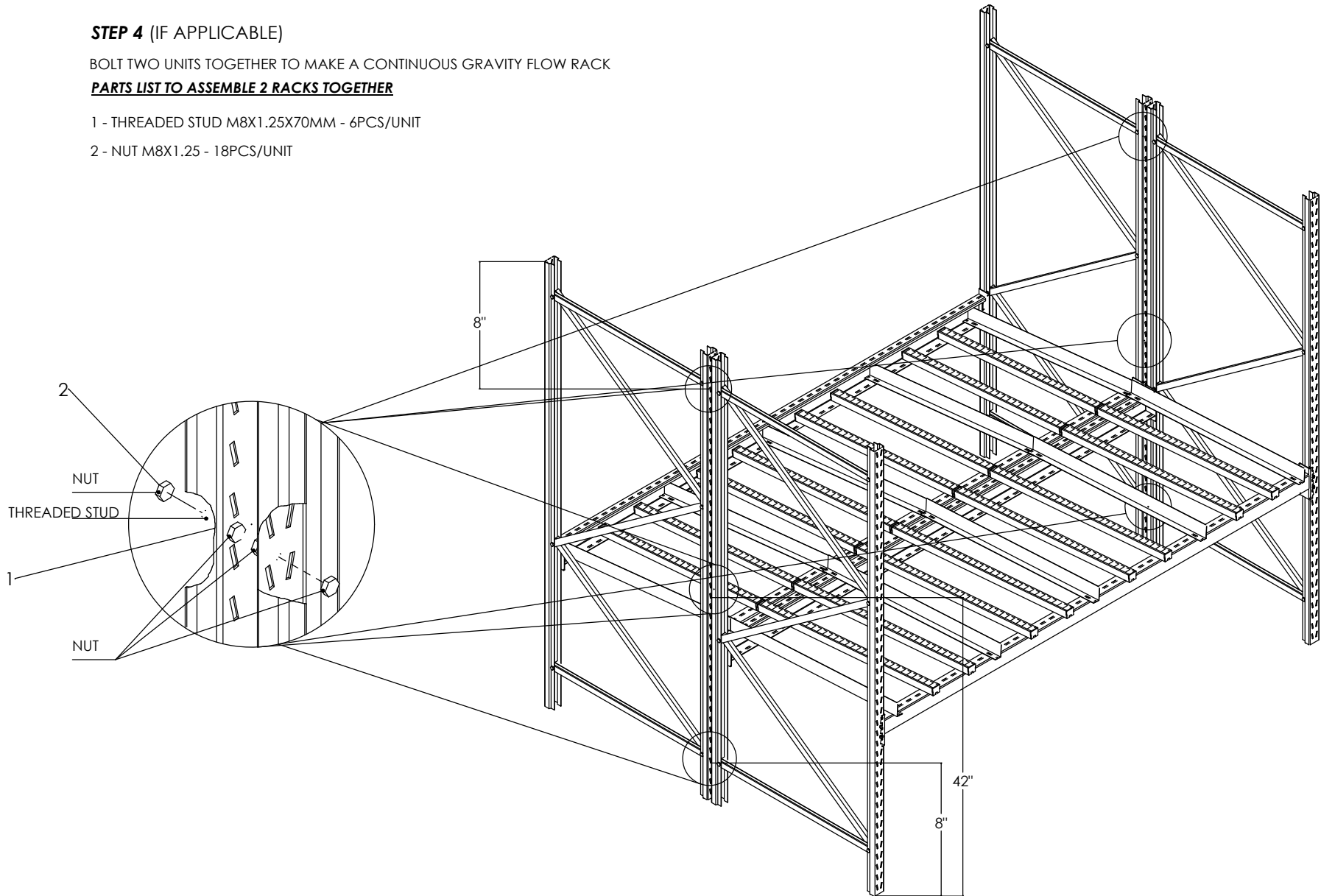
STEP 4 (IF APPLICABLE)

BOLT TWO UNITS TOGETHER TO MAKE A CONTINUOUS GRAVITY FLOW RACK

PARTS LIST TO ASSEMBLE 2 RACKS TOGETHER

1 - THREADED STUD M8X1.25X70MM - 6PCS/UNIT

2 - NUT M8X1.25 - 18PCS/UNIT



GRAVITY FLOW RACK ASSEMBLY INSTRUCTIONS

9/24/2007



Fig.1

M8-1.25x50mm long Bolt (12 pcs/unit)
to secure horizontal & angle bracing to
to uprights

Position of bottom horizontal brace (Fig.2)



Fig.2

7 1/4"

Position of top horizontal brace (Fig.3)

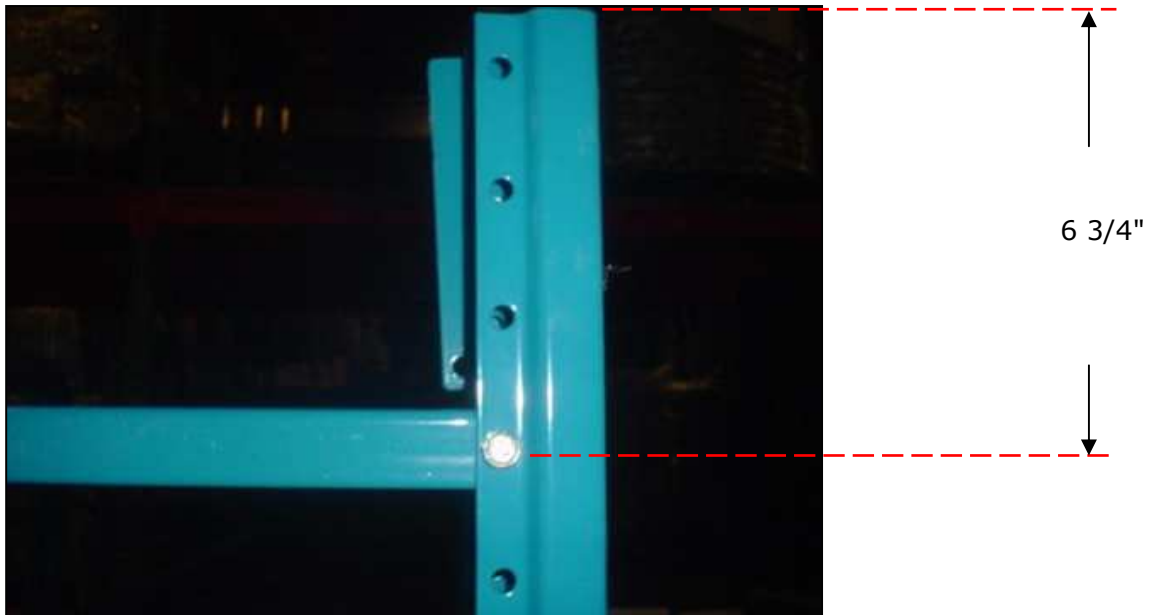


Fig.3

Spacer 4 pcs/unit



Fig.4

Roller bar

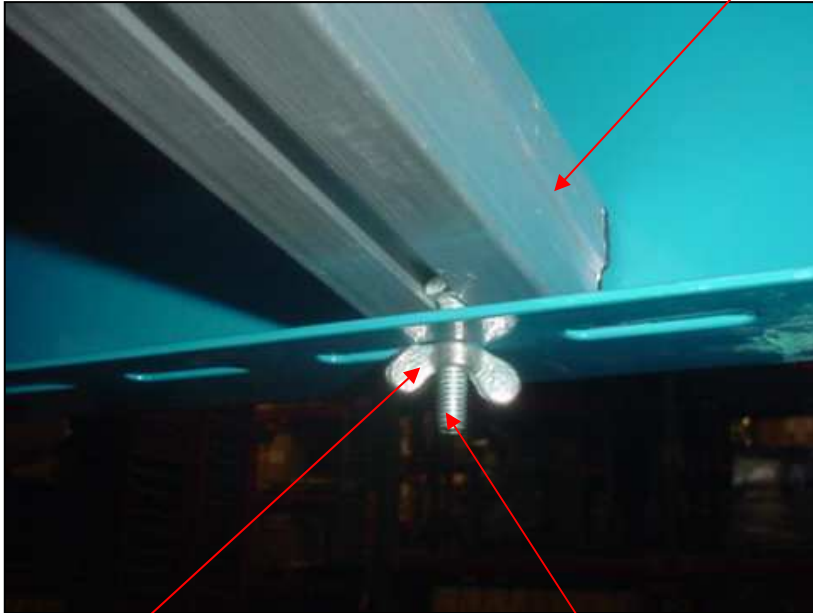


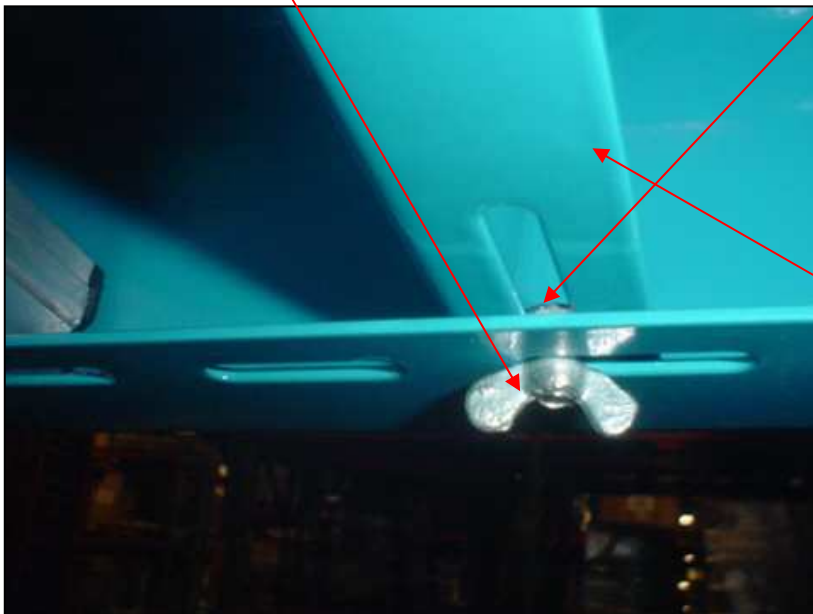
Fig.5

M6-1.25x25mm long Bolt 16 pcs/shelf to secure 8 roller bars.

M6-1.25 Wing Nut 16 pcs/shelf to secure 8 Roller bars

M6-1.25 Wing Nut 8pcs/shelf to secure 4 dividers

M6-1.25x10mm long Shoulder Bolt 8 pcs/shelf to secure 4 dividers



Divider

Fig.6

Bolt two units together to make a continuous Gravity Flow Rack

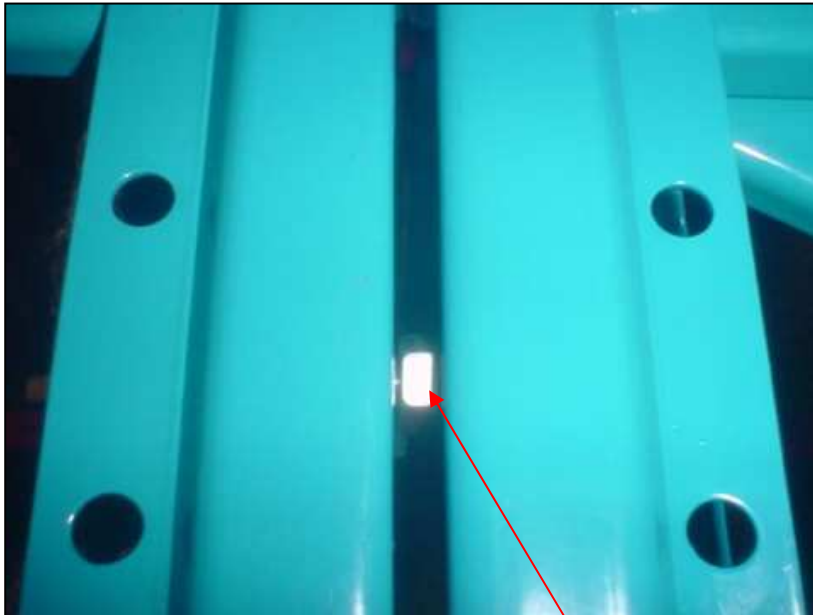


Fig.9

M8-1.25 nut as a spacer between 2 racks, 18pcs./unit

M8-1.25x70mm long stud, 6 pcs./unit

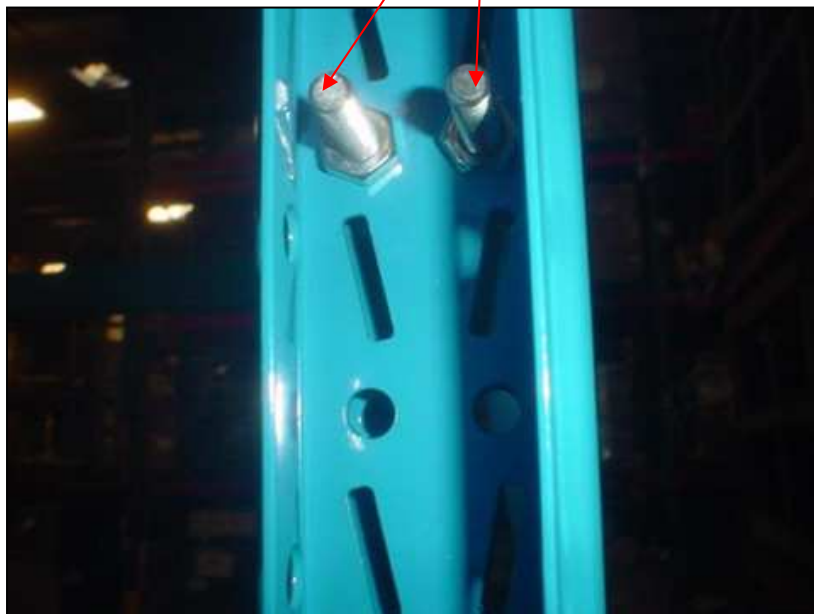


Fig.10